

vstal
STEEL COMPANY

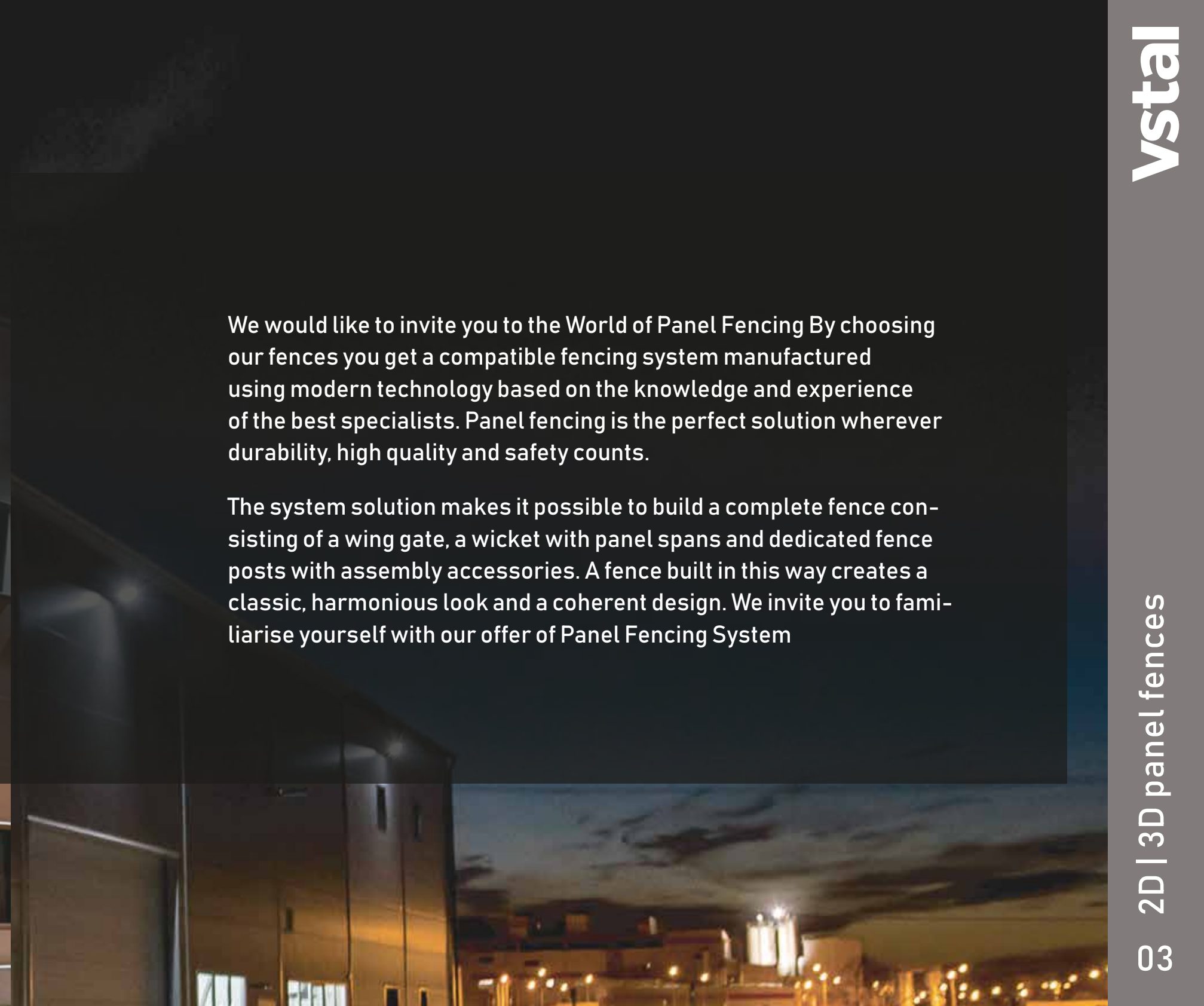


Product catalog - panel fences

Cooperation with company was founded on the basis of several years of experience in steel market. Its first steps were taken in the production of steel profiles for the window, construction and fencing industries. Today, our customers are the largest manufacturers not only in Europe but also worldwide. The company's ambition is its continuous development, gaining new experience and searching for modern solutions and technologies.

That is why the Company has been strongly developing and expanding its range of Panel Fencing Systems from 2019, which are a universal solution for both industrial and private areas.

Company supplies high quality products, in line with European standards, meeting the expectations of even the most demanding customers



We would like to invite you to the World of Panel Fencing By choosing our fences you get a compatible fencing system manufactured using modern technology based on the knowledge and experience of the best specialists. Panel fencing is the perfect solution wherever durability, high quality and safety counts.

The system solution makes it possible to build a complete fence consisting of a wing gate, a wicket with panel spans and dedicated fence posts with assembly accessories. A fence built in this way creates a classic, harmonious look and a coherent design. We invite you to familiarise yourself with our offer of Panel Fencing System

BESCHREIBUNG DES STABMATTENSYSTEMS

Panel fences are currently one of the most widely used fence systems. They owe their popularity primarily to their extraordinary durability and high aesthetics. An unquestionable advantage is also the easy and quick installation of the entire fence system. The 3D and 2D panel fences available in our offer are products of the highest quality, equipped with modern joining systems.

A wide selection of panels will allow you to optimally adapt them to the size, shape of the plot and the architectural style of the buildings located on it. In addition to a wide range of shapes, our offer also includes a full range of colors for the panel fences offered with an anti-corrosion protection system that guarantees long-term use.

AVAILABLE SYSTEMS

PANEL FENCE

2D

PANEL FENCE

3D

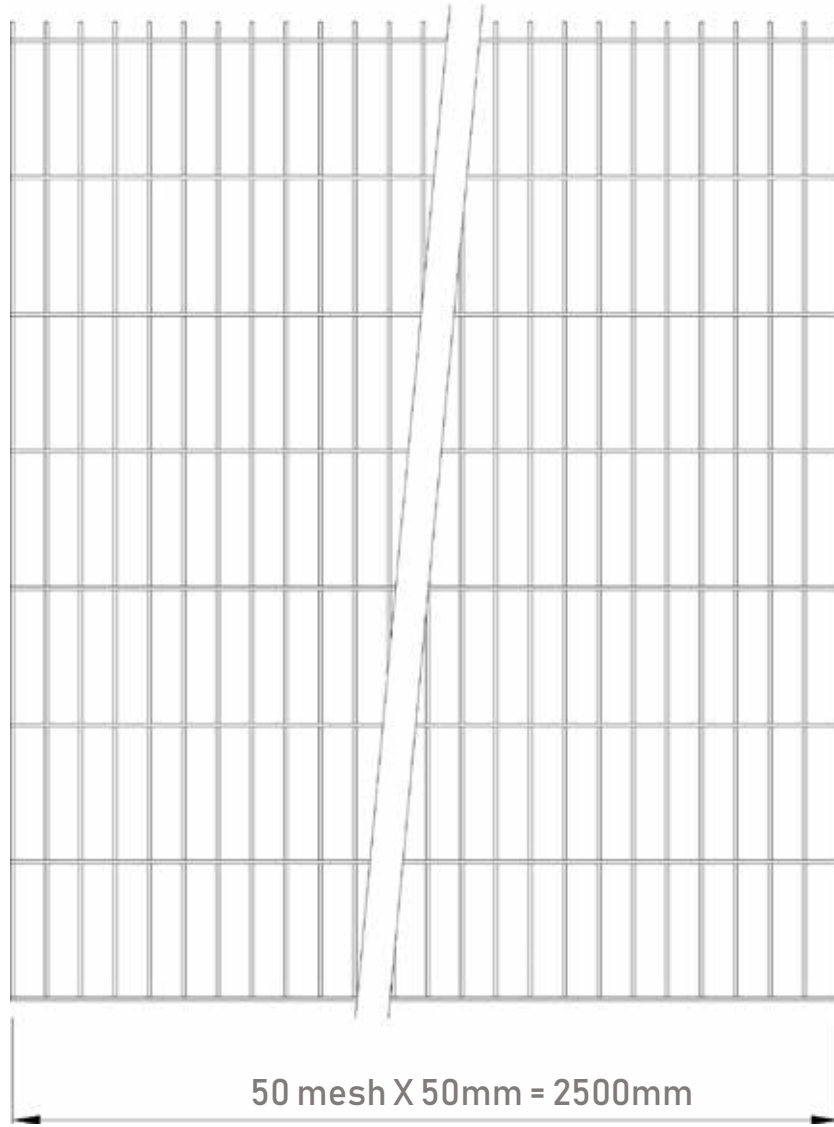
TECHNICAL DATA OF 2D PANELS

- ✓ Galvanizing in compliance with EN ISO 1461
- ✓ Fastened with a two-piece clamp
- ✓ Steel profile post 60 mm x 40 mm
- ✓ The horizontal bars diameter 2 x 6 mm or 2 x 8 mm
- ✓ Panel length up to 2500 mm
- ✓ Powder coating
- ✓ Mesh size 50 x 200 mm

TYPE 2D - 50/200 [WIRE 6/5/6] / 2D - 50/200 [WIRE 8/6/8]

PANEL SIZE	WIDTH MM	2500	2500	2500	2500	2500	2500
	HEIGHT MM	1030	1230	1430	1630	1830	2030
POST HEIGHT	WITH FOUNDATION	1800	2000	2300	2400	2600	2900
	NO FOUNDATION	1600	1800	2000	2200	2300	2600
NUMBER OF CLAMPS		2	2	3	3	4	4

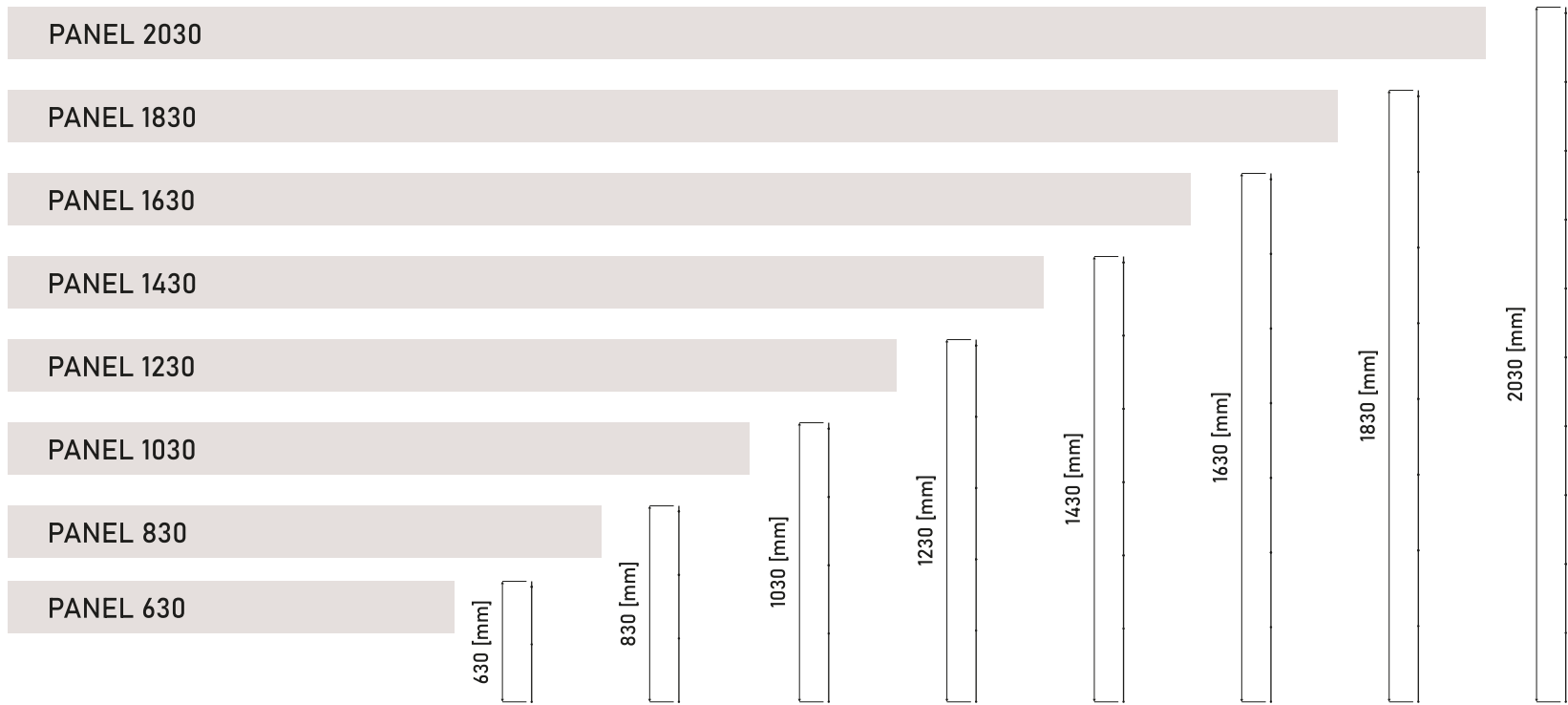
THE 2D PANEL TECHNICAL DRAWINGS



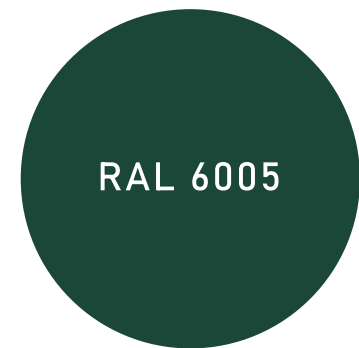
CONNECTION DETAILS



PANEL DIMENSIONS 2D



STANDARD PANELS COLORS



Other colors according to the RAL palette available on individual order

2D swing gate and wicket system

The 2D gate and wicket system was developed as a comprehensive, lightweight and highly functional solution for moving fencing elements for single-family houses, public facilities and industry. Supporting posts and a hinge and lock set are included with the gate or wicket.

The leaf is covered with a 2D fence panel with a wire diameter of 6/5/6 or a 2D Super panel with the following parameters: 8/6/8.



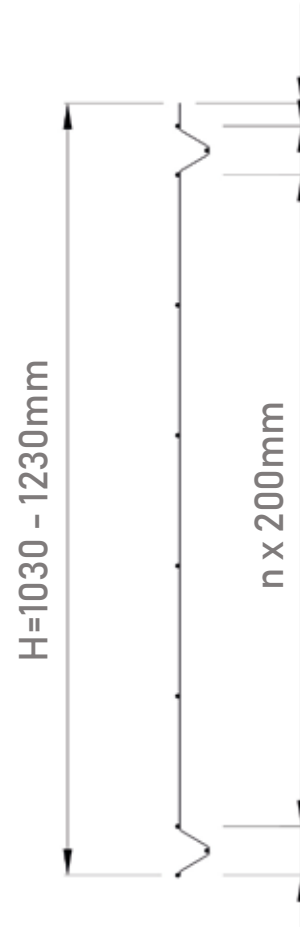
TECHNICAL DATA OF 3D PANELS

- ✓ Galvanizing in compliance with EN ISO 1461
- ✓ Fastening with a two-piece clamp with a cap
- ✓ Steel profile post 60 mm x 40 mm
- ✓ The horizontal bars diameter 4 x 5 mm
- ✓ Panel length up to 2500 mm
- ✓ Powder coating
- ✓ Mesh size 50 x 200 mm, 55 x 200 mm, 75 x 200 mm

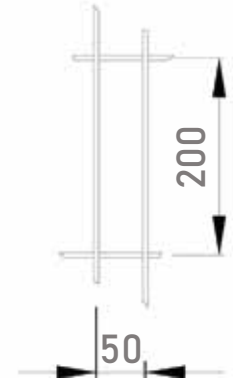
TYPE 3D – 50/200 [WIRE 4/5] / 3D – 55/200[WIRE 4/5] / 3D – 75/200[WIRE 4/5]

PANEL SIZE	WIDTH MM	2500	2500	2500	2500	2500
	HEIGHT MM	1030	1230	1530	1730	2030
POST HEIGHT	WITH FOUNDATION	1800	2000	2300	2600	2800
	NO FOUNDATION	1500	1800	2000	2300	2600
NUMBER OF CLAMPS		2	2	3	3	4

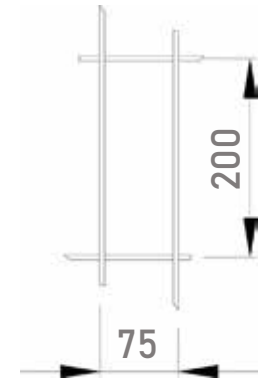
THE 3D PANEL TECHNICAL DRAWINGS



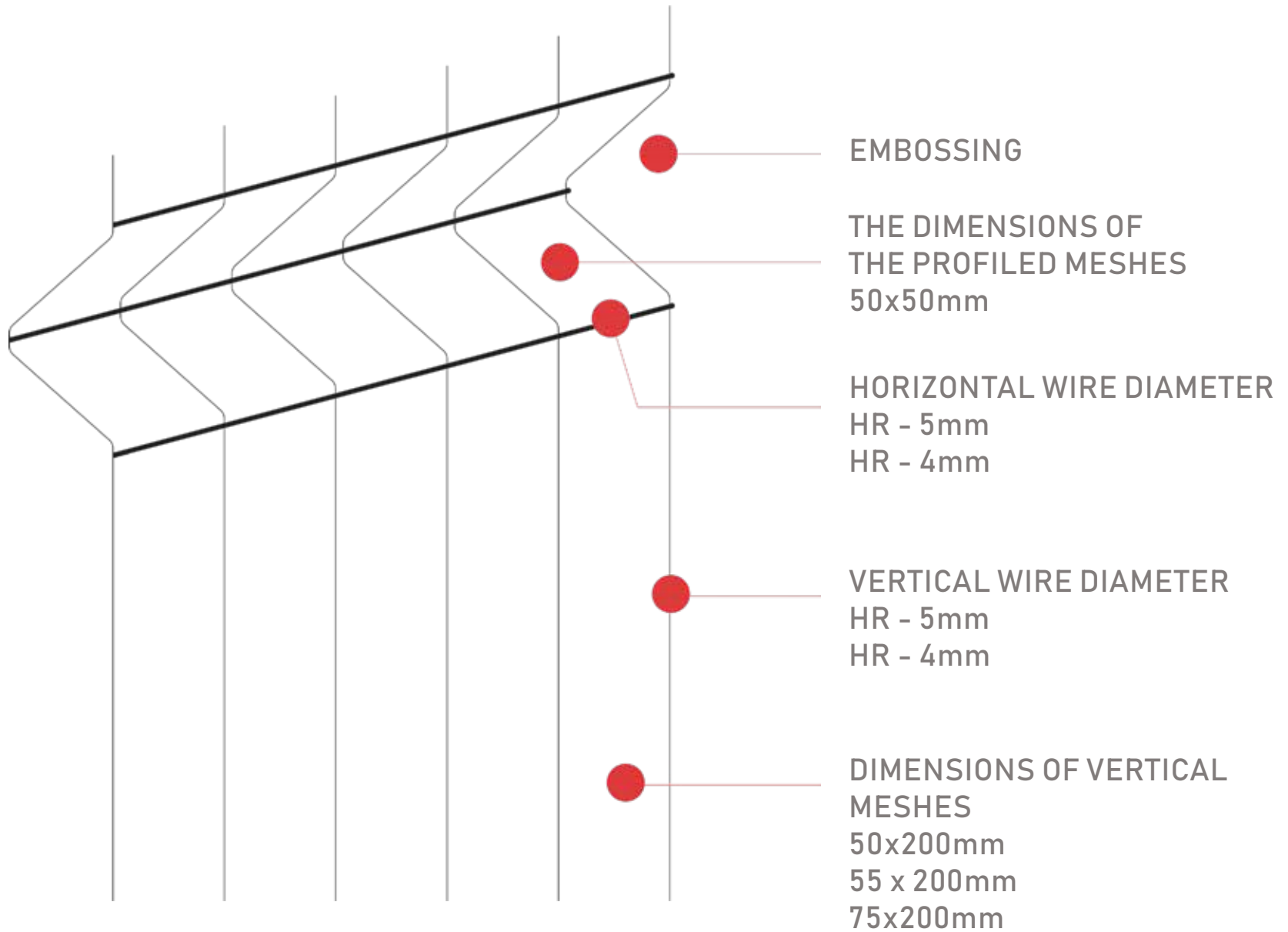
Mesh size X
50 x 200 (axial)



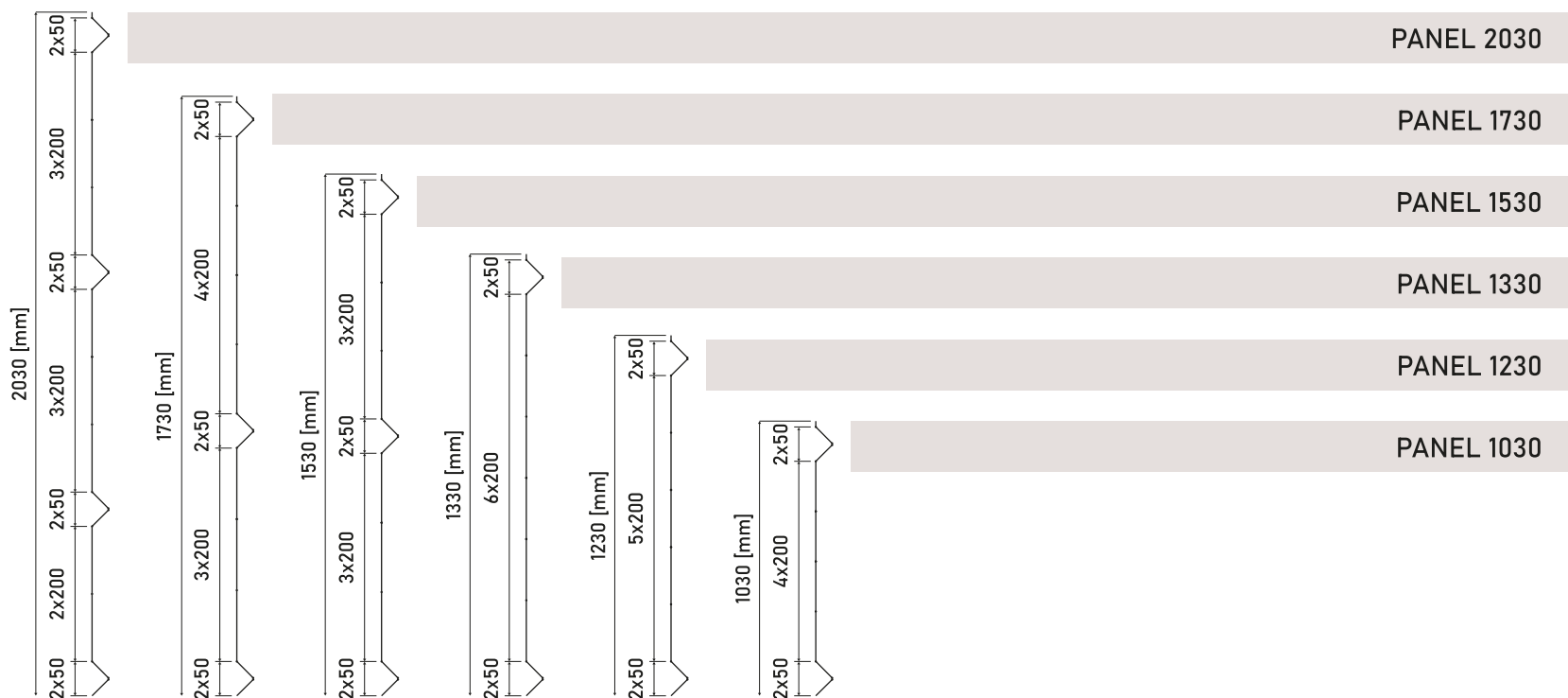
Mesh size X
75 x 200 (axial)



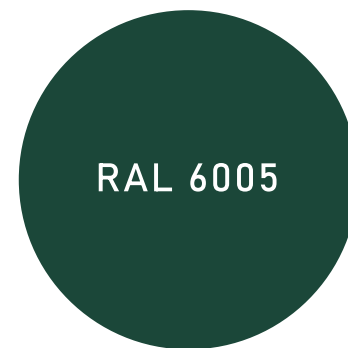
CONSTRUCTION DETAILS 3D PANEL



PANEL DIMENSIONS 3D



STANDARD PANELS COLORS



Other colors according to the RAL palette available on individual order

3D swing gate and wicket system

The 3D system of gates and wickets is dedicated both for domestic spaces, public spaces or industrial and recreational facilities. Its special feature is the possibility to harmonise the line of coverage of the gates and wickets with the line of the fence made of company fencing panels. The coverage of the gates and wickets consists of welded 3D fencing panels.

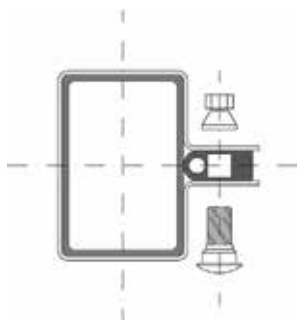
Solid profile supporting posts and a hinge and lock set are an integral part of the wicket and gate system. A bottom bolt is used in the double-leaf gate. Opening method - manual. Two opening directions available: PW (right - inwards) and LW (left - inwards). Reinforced construction with a bracket made of a section 60 x 40 mm.



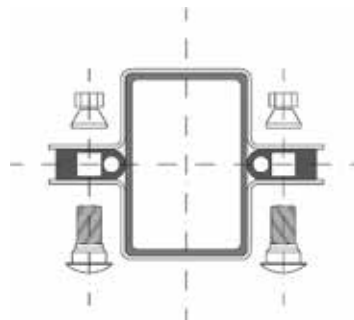
Installation of a panel fences system

TYPES OF MOUNTING CLAMPS

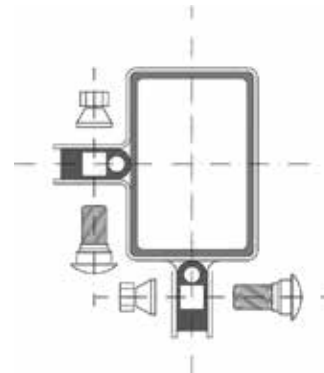
Initial



Indirect

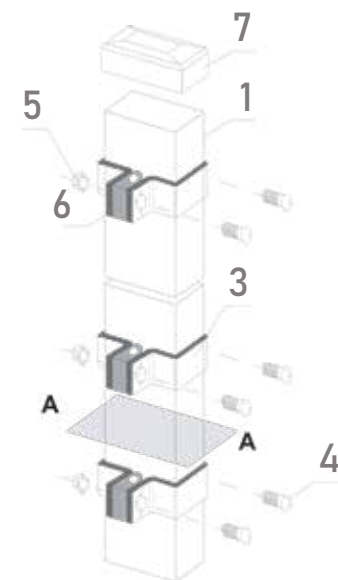
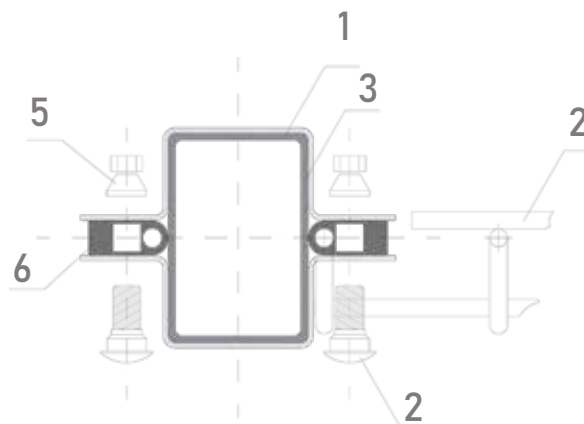


Corner

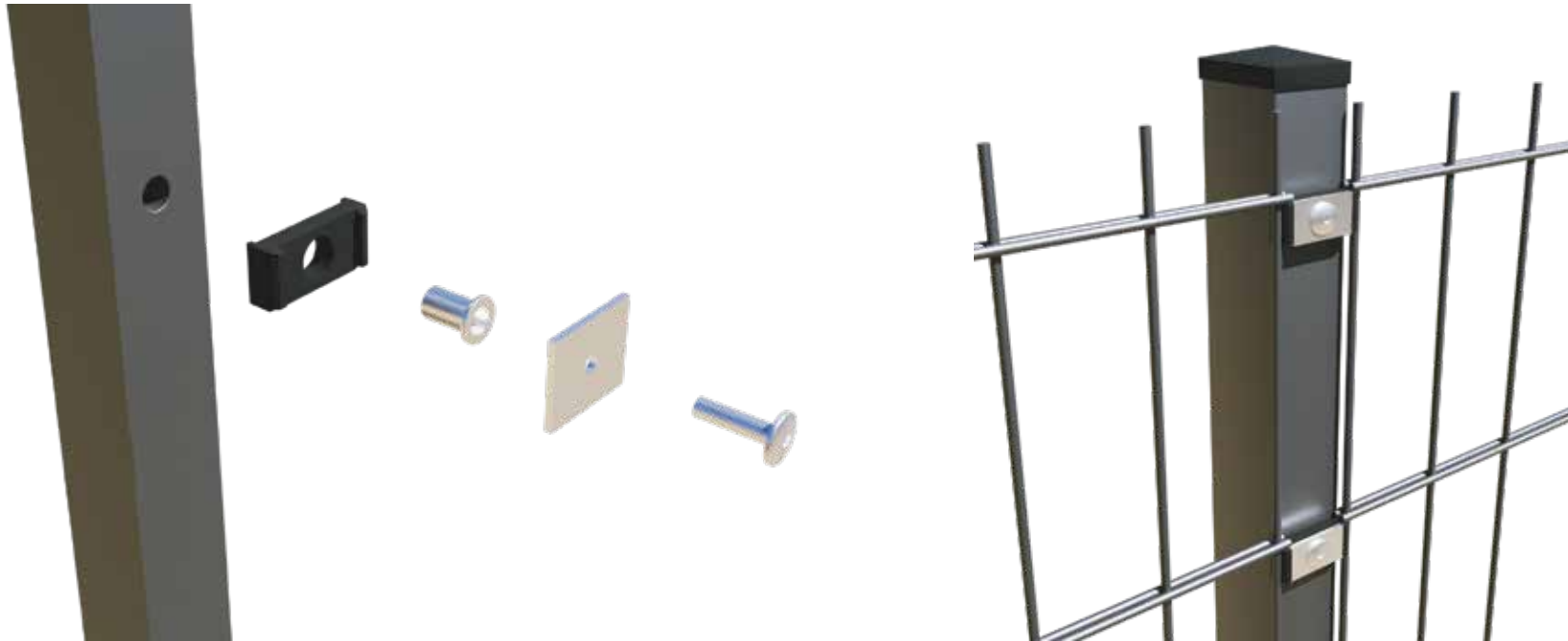


FASTENING WITH A 40X60 MOUNTING CLAMP

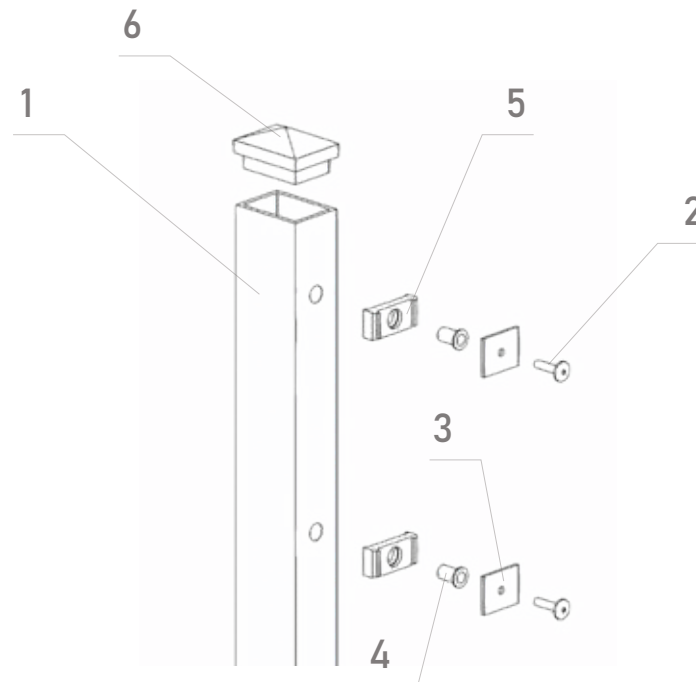
- | | |
|---|----------------------|
| 1 | post 40x60xH [mm] |
| 2 | fence panels |
| 3 | mounting clamp 40x60 |
| 4 | Carriage bolt |
| 5 | Seal nut |
| 6 | Distance / PE -H |
| 7 | Surface cap/PE |



CLAMPING BY MEANS OF PRESSURE CLAMP



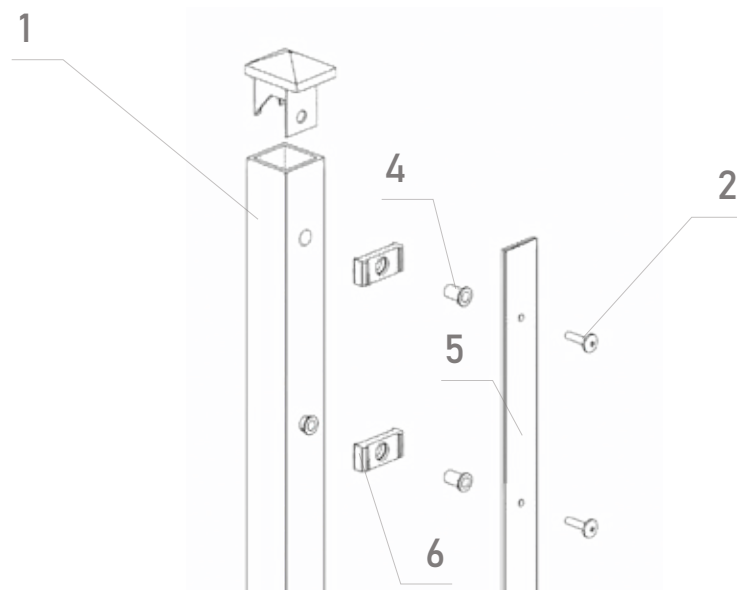
1	post 40x60xH [mm] with openings for easy assembly
2	stainless steel bolt M8
3	galvanised clamp
4	rivet nut
5	spacer/PE
6	protective cap/P



CLAMPING WITH MOUNTING STRIP



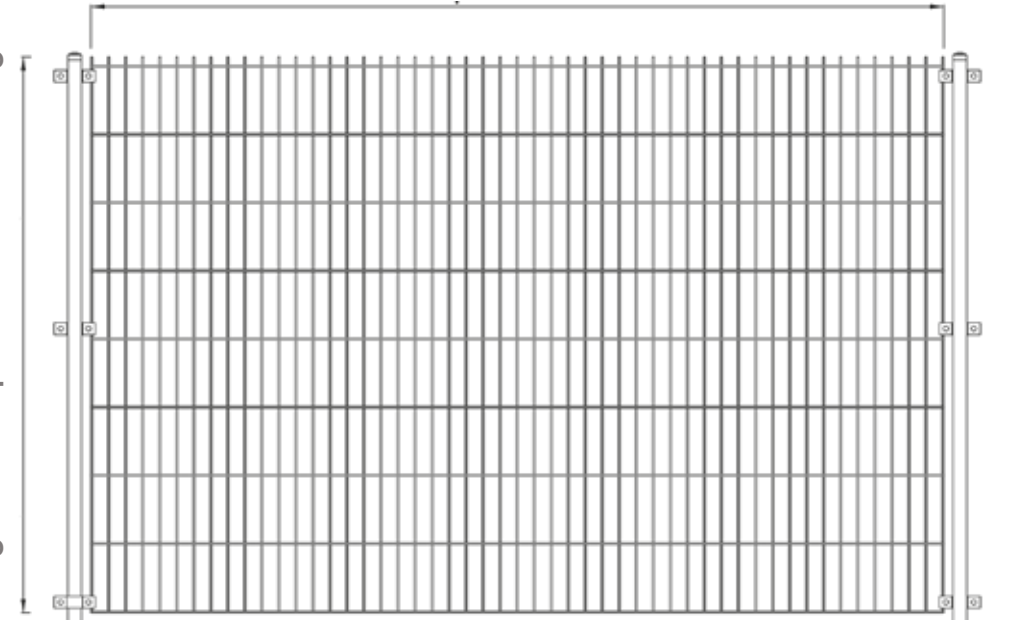
- 1** post 40x60xH [mm] with openings for easy assembly
- 2** stainless steel bolt M8
- 3** plastic hanger
- 4** rivet nut
- 5** hthreaded flat bar 40 x 5 (mm)
- 6** spacer/PE
- 7** protective cap/P



2D PANEL INSTALLATION

Height of the panel H - according to the table

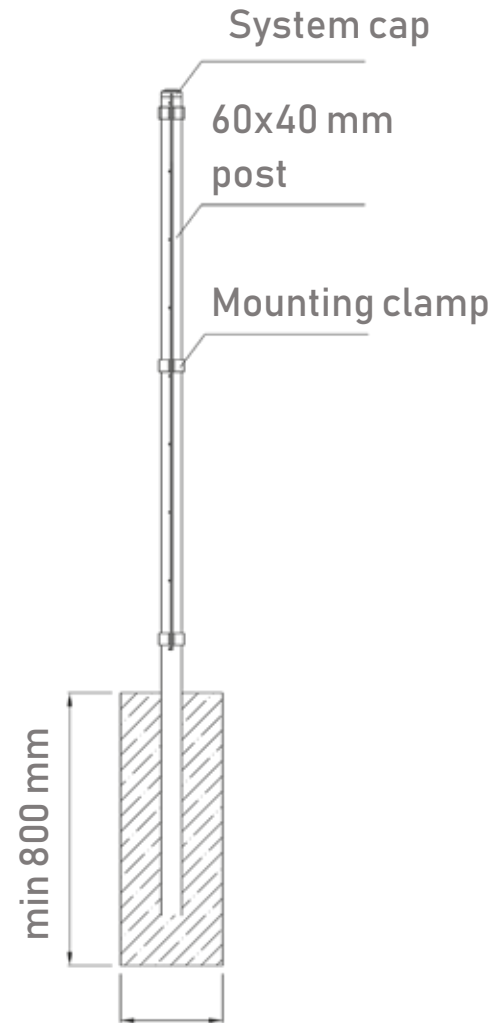
Panel width L - 2500mm



Designed ground level

The axial distance of the posts - 2600 mm

Height of the post H - according to the table



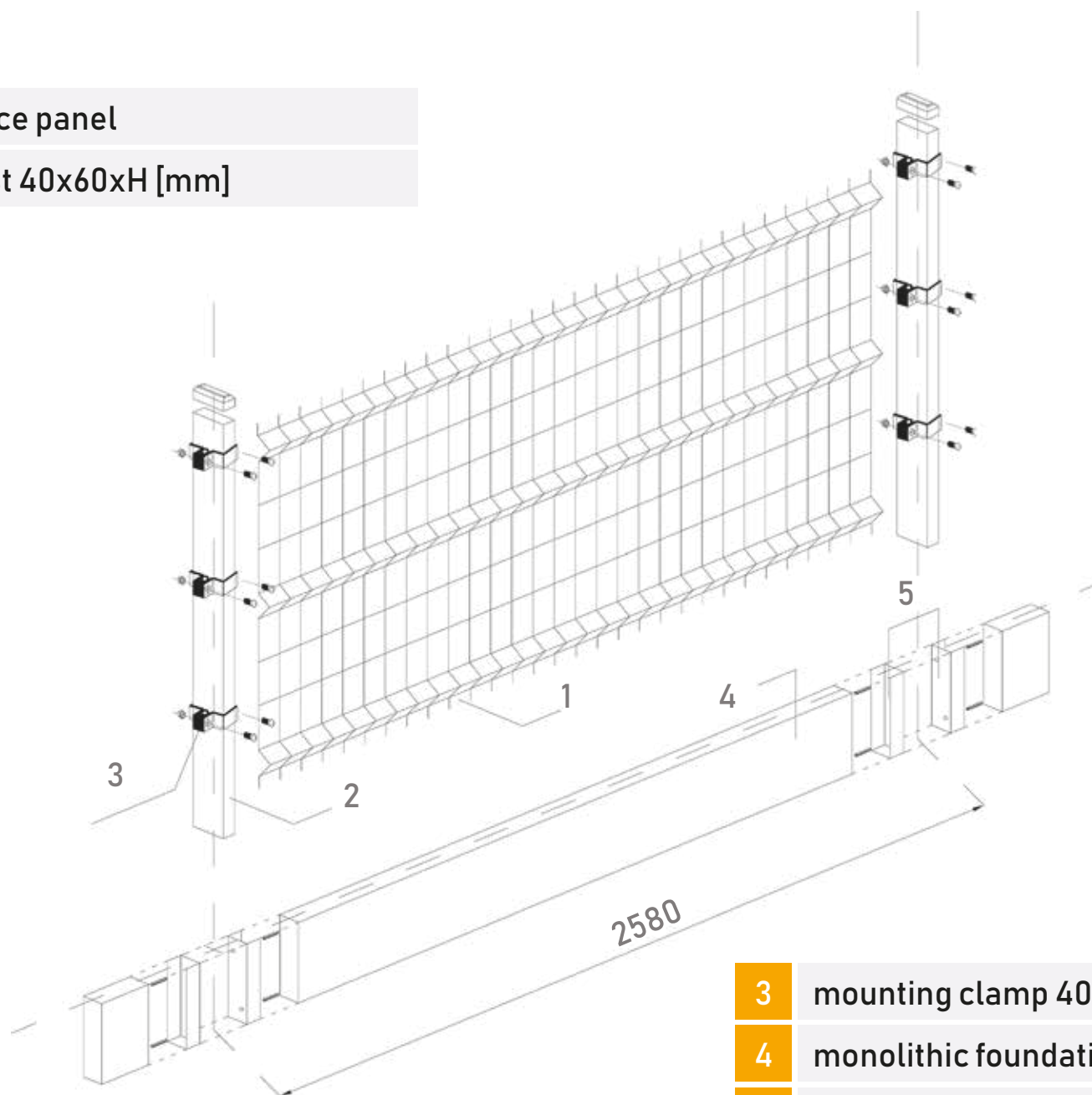
Monolithic foundation

Monolithic foundation

250-300 mm

3D PANEL INSTALLATION

- 1 fence panel
- 2 post 40x60xH [mm]



- 3 mounting clamp 40x60
- 4 monolithic foundation
- 5 concrete connector

ACESSORIES

Corner



Available in the color of the panels

MOUNTING CLAMP

Indirect



Final



CAPS

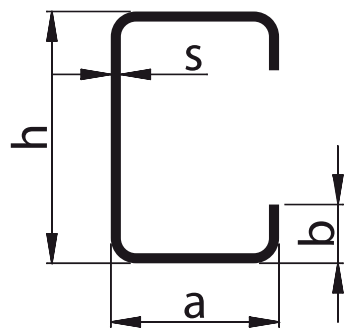


Sliding gate profile 80 x 80 x 27.5 mm

Semi-closed c-profile, used for sliding gates with a standard cross-section of 80 mm x 80 mm 27.5 mm, wall thickness of 5 mm

Made of galvanised steel to ensure high load-bearing capacity, weather resistance and trouble-free operation of the sliding gate

- ✓ Used for gates or sliding doors.
- ✓ Available in a wide range of sizes
- ✓ Can be supplied in Standard RAL 7016 , RAL 9005, 6005 colours.



Sliding gate profile

Basic parameters:

cross-section (h x a): 80 x 80 mm

wall thickness (s): 5.0 mm

steel grade: DX51

hot-dip galvanised finish coating: Z100-Z140

gap (b): 2



Steel profiles

PROFILES

We offer square and rectangular steel profiles. Our products are made of high-quality steel. The closed profiles we offer are perfect for welding and galvanizing. We only use steel grades that are suitable for their intended use.

The profiles we offer, made in the cold

bending technology, are available in a wide range of sizes. The wall thickness is 1 to 3 mm.

Our steel profiles meet the requirements of PN-EN 10305.

CLOSED COLD BENT SECTIONS

Square - cold bent from hot rolled and galvanized sheet metal strip - dimensions:

✓ 16 x 16 mm

✓ 40 x 40 mm

✓ 80 x 80 mm

✓ 20 x 20 mm

✓ 50 x 50 mm

✓ 100 x 100 mm

✓ 25 x 25 mm

✓ 60 x 60 mm

✓ 30 x 30 mm

✓ 70 x 70 mm

Wall thicknesses from 1 to 3 mm available.

CLOSED COLD BENT SECTIONS

Rectangular - cold bent from hot rolled and galvanized sheet metal strip - dimensions:

✓ 50 x 40 mm

✓ 60 x 40 mm

✓ 80 x 20 mm

✓ 80 x 40 mm

✓ 100 x 20 mm

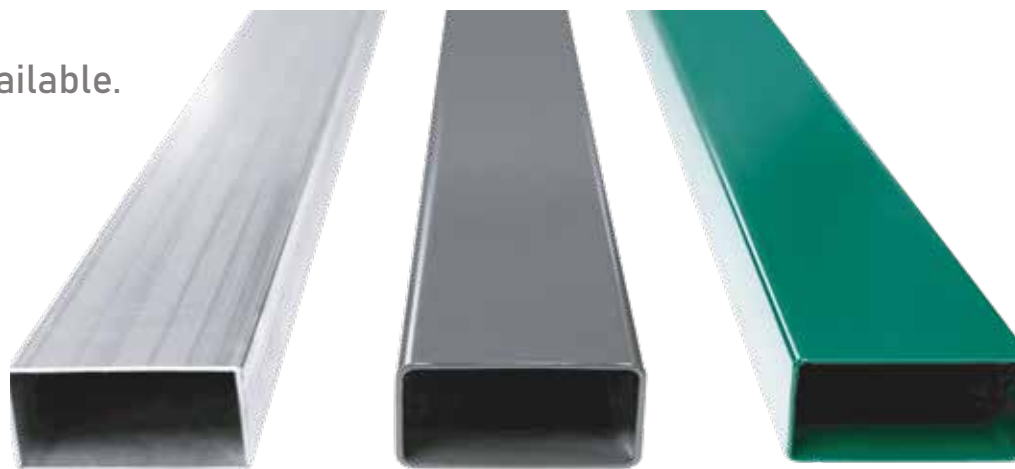
✓ 100 x 40 mm

✓ 100 x 50 mm

✓ 120 x 20 mm

✓ 120 x 40 mm

Wall thicknesses from 1 to 3 mm available.



STANDARD COLORS OF PROFILES

AL 7016

RAL 9005

RAL 6005

Other colors according to the RAL palette available on individual order.

Steel pipes

Our construction pipes are used in various types of elements. They are made of the highest quality materials that guarantee long-term durability.

Even after a long contact with moisture and air, it does not become covered with a layer of rust. Additionally, they are deformation resistant.

We offer black and galvanized pipes with longitudinal weld in the following sections:

- ✓ Ø 42
- ✓ Ø 48
- ✓ Ø 60



Wall thicknesses available from 1 to 3 mm.

WE INVITE YOU TO COOPERATION



ul. Argentyńska 5A/17
03-957 Warszawa, Polska

Tel. +48 693 948 939

e-mail: kp@vstal.pl
www.vstal.pl

distributor

